



SOPPEC
CONSTRUCTION

Technima





SPRAY PAINTS & MARKING ACCESSORIES

Considered a benchmark in the building and public works industry for over 15 years, SOPPEC CONSTRUCTION worksite paint markers were the first to be fitted with patented safety caps to guarantee flawless reliability for users.

With seven different product ranges, TECHNIMA is able to meet the needs of the building and public works industry and the diversity of marking applications encountered: **short-term and temporary marking, fluorescent, non-fluorescent, more environmentally-friendly (with a formula containing over 20% water).**

SAFETY AND THE ENVIRONMENT - OUR PRINCIPAL PRIORITIES

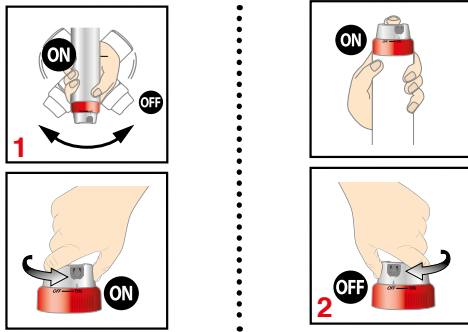
- Our products are designed without CMR compounds (carcinogenic, mutagenic and reprotoxic...)
- Without Hexan et Methanol, Toluen et Xylen
- Without heavy metals such as Lead (Pb), Cadmium (Cd), ...
- Without Environmental Hazard statement n° 412: "toxic to aquatic organisms long-term damage to the ecosystem"
- Our labels are in compliance with EU regulation n°1272/2008 and with its adaptation



ADVANTAGES

Two purpose-designed safety caps are fitted to the construction and public works aerosol paint ranges:

- The TP cap patented by the SOPPEC brand and developed by TECHNIMA teams, with a base made from recycled plastic, for aerosols used head down: FLUO TP®, PROMARKER®, S MARK, FLUO TP HYDRO and TEMPO.
- A second specific cap for IDEAL SPRAY® (multi-directional use).
- The formulations for all aerosols comply with our triple certification rules.
- Products can be used even under very low temperatures, thanks to our high pressure cans and specific propellant gas.



QSE CERTIFIED MANAGEMENT SYSTEM

Our integrated QSE management system is based on three ISO 9001 certifications for

Quality, ISO 14001 for the Environment and ISO 45001 for Health and Safety. Within these three complementary fields, TECHNIMA's own approach is based on risk analysis and prevention, continuous performance improvement, regulatory compliance and customer satisfaction. Since 2004, our triple certification has been successfully renewed every 3 years.

STORAGE & HANDLING

Aerosols should be stored at a temperature of between 15°C and 25°C and between 50% and 60% relative humidity.

Storage time before use, if stored correctly as above:

- Solvent based markers: 5 years.
- Water based markers: 3 years.

Do not expose to temperatures above 50°C.

Keep away from sources of ignition, heat and sunlight.

As with all handling and storage operations, NO SMOKING is very strongly recommended.

PACKAGING INFORMATION

All our aerosols contain 650 ml gross volume for a net volume of 500 ml.

They are delivered on film-wrapped pallets of 75 boxes, each box containing 12 aerosols.



PRO MAKER

12 MONTHS

Registered in



NON-FLUORESCENT WORKSITE MARKING PAINT

PROMARKER complements the range of fluorescent paint markers and can be used for many different marking/identification purposes: roads and highways, road signage, earthworks, pipework, building works and electrical installations. With excellent covering power it masks other markings easily and effectively. Easy and safe to use, the PROMARKER is fitted with the safety cap patented by the SOPPEC brand and developed by the TECHNIMA team.

ON STOCK





PROPERTIES

.....

- Excellent adhesion to many different types of surface (even wet): concrete, asphalt, sand, wood, grass, etc.
- A particularly robust safety cap (a full aerosol dropped from a height of 1.50m will remain intact).
- Rapid drying: approximately 10 min.
- Particularly good covering power:
- Marking duration: over 12 months (depending on the application conditions and surface), high resistance to weathering and UV rays.
- Temperature range: -15°C to 40°C (operates down to -15°C).
- Wide range of colors including white and brown.

SPECIFICATIONS

.....

Composition

Binder: thermoplastic acrylic.

Pigments: mineral and organic, free from heavy metals (lead, cadmium).

Solvents: mixture of aliphatic hydrocarbons and esters (no chlorinated solvents or aromatic compounds).

Propellant: specific blend of isobutane and propane.

Application method

Manually or using our purpose-designed application equipment (One-wheel applicator & gun handle). See Accessories page.

BEFORE USE: shake vigorously head down.

AFTER USE: purge head up.

Health and safety

Safety data sheets are available free of charge on our website www.technimanordic.com

No paint mist or drips during use thanks to the safety cap patented by the SOPPEC brand and developed by TECHNIMA.

CLP labelling with two pictograms.





Technima Nordic
Krokslätts torg 5 SE-431 37 Mölndal
SWEDEN
T: +46 (031) 102 190
E: info@technimanordic.com

Technima Central
Kreuzerweg 77955 Ettenheim
GERMANY
T: +49(0) 7822 789 00 10
E: info@technimacentral.com

Technima Benelux
Hambakenwetering 22A
5231 DC 's- Hertogenbosch
NETHERLANDS
T: +31 736 314 345
E: info@technimabenelux.com

CIA Technima SUD EUROPA
SRL- Via Santa Brigida,
43- 10060 Roletto (TO)
ITALY
T: +39 0121 542 542
E: ciasudeuropa@technima.com

Technima France
Z.I. 16440 NERSAC
FRANCE
Tél. +33 (0)5 45 90 93 12
Fax. +33 (0)5 45 90 58 67
technimafrance@technima.com

www.technima.com

